

2017/2018 CATALOGUE

TRUCK AND BUS TYRES



www.zc-rubber.com



www.westlaketyre.com/eu



Facebook - Westlake



ZHONGCE RUBBER GROUP CO., LTD.

Version 2 Printed in 2017



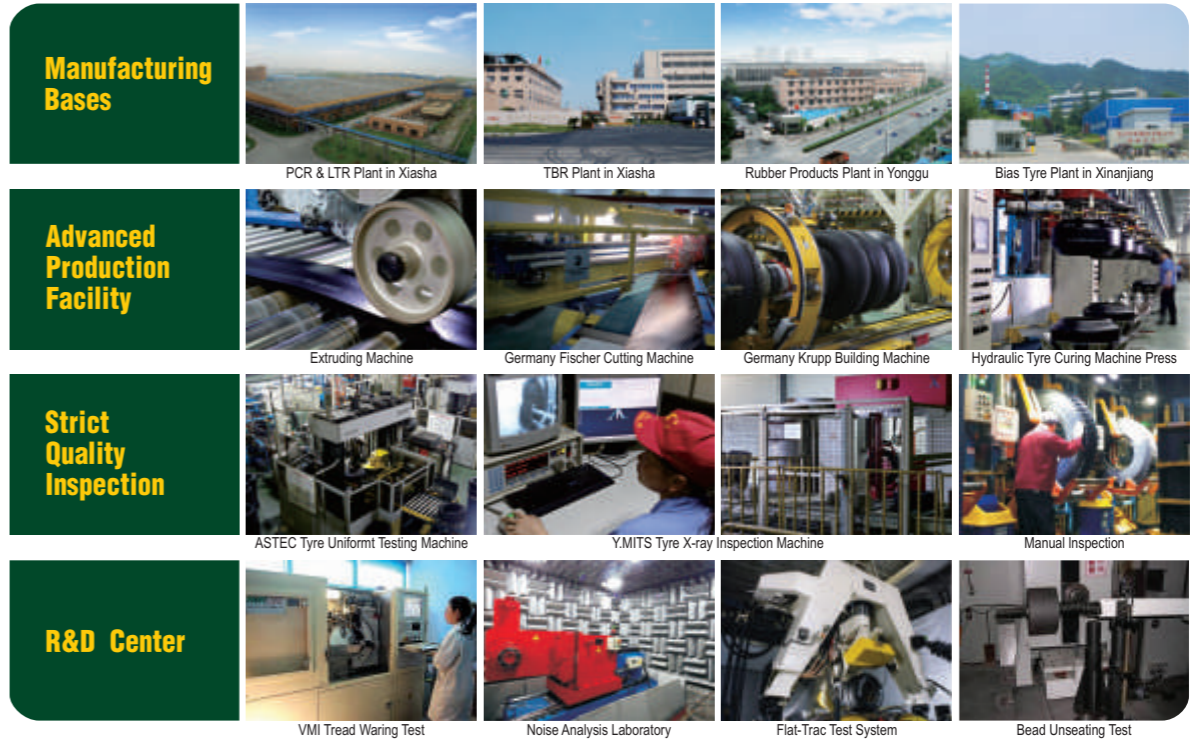
- A Company established in Year 1958
- No. 1 Tyre Manufacturer in Mainland China
- No. 10 of Top 75 Global Tyre Manufacturers in Year 2017
- Sale revenue reached USD3.23 billion in Year 2016

Zhongce Rubber Group Co., Ltd. (ZC-RUBBER) takes great pride in producing tyres that rate among the best in the world. Our corporate philosophy is all about collaboration with our suppliers, with over 10,000s of companies who sell our products around the world, and with our millions of end customers who trust our tyres every single day.

Our engineers are working together closely with our international Research and Development (R&D) team combined of Japanese and Korean experts. We keep on investing millions of US dollars in establishing various production and testing facilities. Meanwhile the quality control system approved by global tyre manufacturers and

international vehicle manufacturers will guarantee the safety and quality of ZC-Rubber tyres.

Today ZC-Rubber is expanding from a Chinese oriented company to a global tyre manufacturer. The subsidiaries located in Southeast Asia, North America, South America and Europe (coming soon) are serving customers without any difference of time and language. The newly established Thailand plant will produce suitable products for local and nearby markets. Safe and value will be the key supplied by ZC-Rubber, who will craft a better future together with partners and friends all over the world.





WESTLAKE TYRE FEATURES

- Special Tread design for each truck application
- Durability of tyres
- Strong tyre casing for retread
- Cool running tyres helping to save fuel
- Eco-friendly product and REACH conformity
- ISO 9001 certified production



TRUCK AND BUS TYRES

WSL1	Highway	Country Road	City	Construction Site		P 10
WTR1	Highway	Country Road	City	Construction Site		P 18
WDL1	Highway	Country Road	City	Construction Site		P 11
WDM1	Highway	Country Road	City	Construction Site		P 20
WTL1	Highway	Country Road	City	Construction Site		P 12
WTM1	Highway	Country Road	City	Construction Site		P 21
WSR+1	Highway	Country Road	City	Construction Site		P 14
WTX1	Highway	Country Road	City	Construction Site		P 23
WSR1	Highway	Country Road	City	Construction Site		P 15
WSS1	Highway	Country Road	City	Construction Site		P 25
WDR+1	Highway	Country Road	City	Construction Site		P 16
WDS1	Highway	Country Road	City	Construction Site		P 26
WDR1	Highway	Country Road	City	Construction Site		P 17
WTS1	Highway	Country Road	City	Construction Site		P 27

APPLICATION AND KEY FEATURE LEGEND

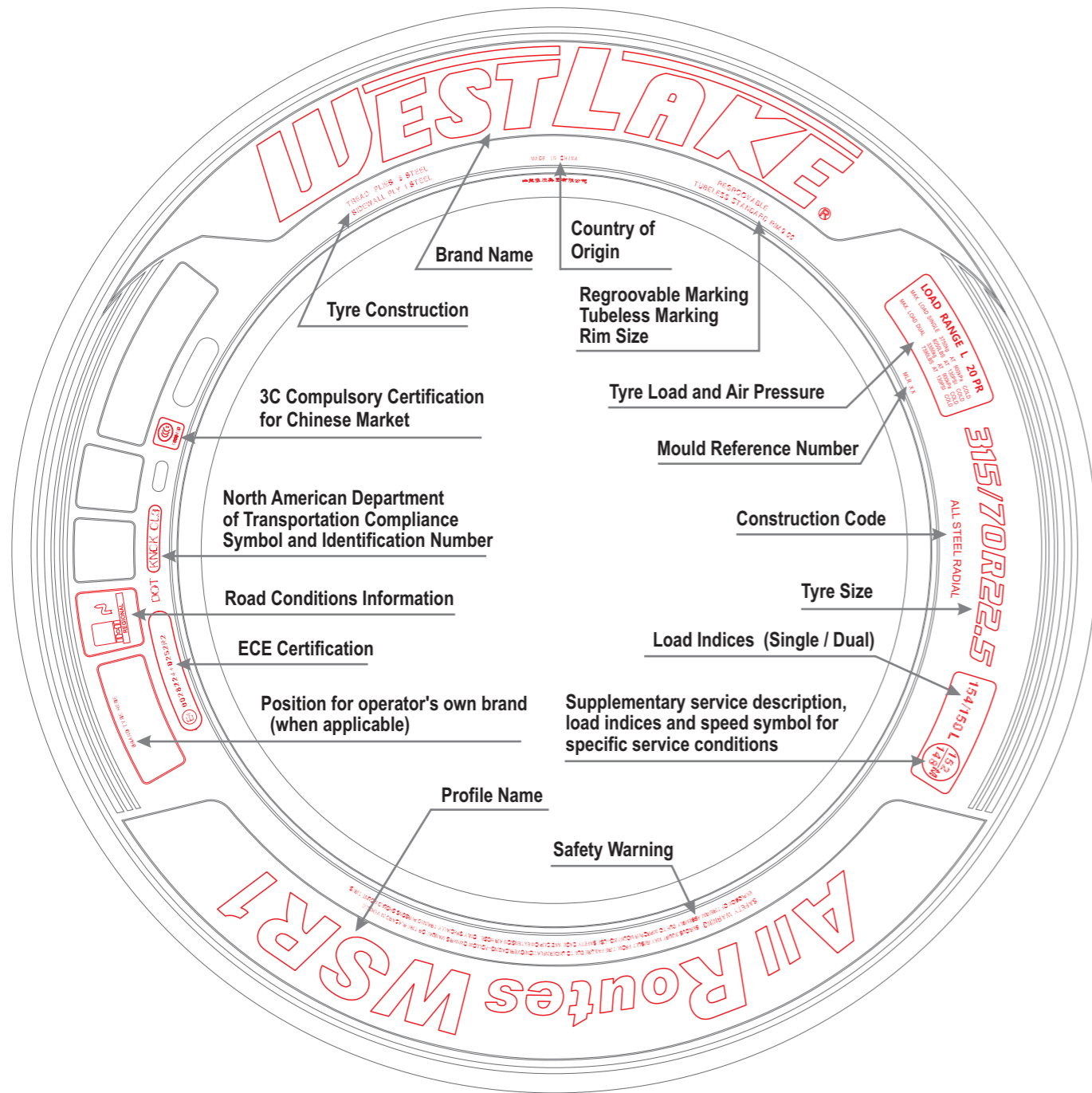
L	Long Haul (Long Run)		<ul style="list-style-type: none"> • Long distance journey with constant speed and less braking and accelerating • Excellent paved road condition with less curves • Less fuel consumption and comfortable ride • High mileage performance
R	Regional (All Routes)		<ul style="list-style-type: none"> • Short to middle distance journey with frequent braking, accelerating and turning • Good paved road with many curves and unexpected rough conditions • Challenging road conditions in winter with snow and ice
M	Mixed Service (Mixed Terrain)		<ul style="list-style-type: none"> • Used both on and off road with expected aggressive, sharp-edge or muddy road condition • Heavy loads and outstanding durability at slow speed and constant stopping • Special protection against the damage caused by the road condition
X	Low Loader (MaX Load)		<ul style="list-style-type: none"> • Applicable for heavy load trailers • Short to long distance transport with reinforced tyre casing for heavy loads
S	Winter (Snow Proof)		<ul style="list-style-type: none"> • Designed for winter use only • Extraordinary traction on snow and ice road surface

TYRE SIDEWALL INSTRUCTION

A series of internationally used numbers and codes exist for the identification of tyre structures, dimensions and main applications as well as the producer information.

This group of codes and numbers is collectively known as the "tyre markings" and permits a precise identification of the tyre.

The picture below gives an example of the tyre markings as they appear on a tyre.



TECHNOLOGIES FOR TYRES WITH THE VALUE

Westlake is constantly striving to create the best solutions for each application.

Westlake's commitment to you and to the environment ensures cost-effective quality tyres.

WESTLAKE's Concept

Westlake provides tyres with longer mileage, greater retreadability, more durability and less fuel consumption, in one word, more value, to fleets in Europe.

Given the extreme demands of today's transport industry, Westlake invests on continuous innovation in tyre technology which is essential and helps the fleets who seek for tyre value and cost saving.

Tyre Construction

Tread

Compounds used in the tread depend on the tyre's specific application needs. WESTLAKE has various compounding strategies to minimise tyre treadwear, and maximise traction, fuel efficiency, and resistance to fatigue, chipping and scaling.

Belt Edge Cushion

WESTLAKE tyres feature a belt edge cushion to help to enhance the structure durability, and therefore extend the tyre life.

Inner Liner

WESTLAKE's inner liner is specially designed to maintain the air pressure of each tyre to avoid any possible tyre damage. The special inner liner compound ensures a significantly longer casing life.

Bead Filler

Two or more different compounds are used in WESTLAKE's bead filler to stiffen the bead for steering response and to control the flexibility of other parts of the tyre.

Belts and Casing

Thin, highly adhesive assembly compounds are used in WESTLAKE's tyre casing and belts to improve the steel cords strength.

Undertread

WESTLAKE's undertread compounds generate less heat in order to prevent tread separation.

Sidewall

WESTLAKE applies special sidewall compounds high flexibility, excellent durability and high resistance to fatigue and weather cracking.

Rim Cushion

WESTLAKE's rim cushion compound is highly resistant to the heat brought by the heavy load or transmitted by the rim so as to extend the tyre life.

How to read the Profile Name

WSR1

W → WESTLAKE

S → Steer
D → Drive
T → Trailer

L → Long Run
R → All Routes
M → Mixed Terrain
X → MaX Load
S → Snow Proof

1 → Product Version

WESTLAKE: YOUR SMART INVESTMENT

Recommendations to ensure the top performance of your WESTLAKE tyres.

Inflation Pressure

Truck tyres for commercial vehicles must be properly inflated to a pressure based on the load, speed and conditions of use for maximum performance in all aspects such as even wear (long mileage), traction and handling stability (riding comfort) in addition to safety issues*.

*Check WESTLAKE's recommendations of PRODUCT TECHNICAL DATA at page 23-24 of this catalogue.

CORRECT INFLATION	UNDERINFLATION	OVERINFLATION
maintains even road contact for maximised performance.	causes abnormal tyre deflection, which builds up excessive heat, and risk of failure. It also causes excessive wear on the shoulder.	increases the risk of impact breaks and other road hazard damage. It also causes excessive wear in the centre.

Tyre pressures should be checked on cold tyres at least every two weeks, using a calibrated pressure gauge. Tyres with lower profiles must be checked strictly due to their less visible sidewall deflection.

WESTLAKE provides inflation pressure stickers (shown as the right) with several different values for certain applications to help customers maintain proper pressures. Please contact your WESTLAKE distributor for details.

850/8.50/124

kPA Bar PSI

WEST LAKE TRUCK & BUS TYRES

Retreading

Every new WESTLAKE truck tyre product is designed and constructed for better retreadability. Please consult your WESTLAKE distributor for details.

Regrooving

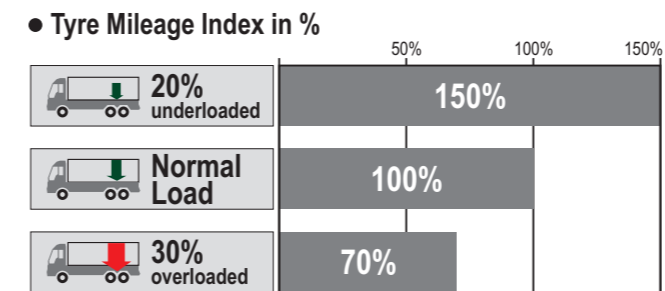
Regrooving must be undertaken when only between 2 to 3 mm of the original tread pattern remains, in accordance with WESTLAKE's recommendations in this catalogue.

Tyre Wear Factors

FUEL ECONOMY & THE ENVIRONMENT

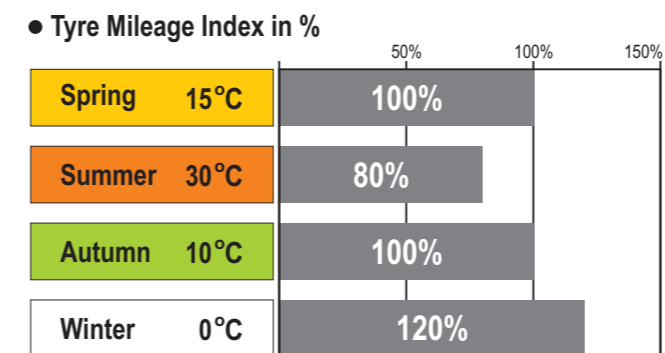
These tables indicate factors of tyre wear. If all factors are taken into consideration and applied correctly according to your vehicle and situation, it will result in best fuel efficiency and help for the protection of our environment. Please contact your WESTLAKE distributor for more details.

CARRYING LOAD



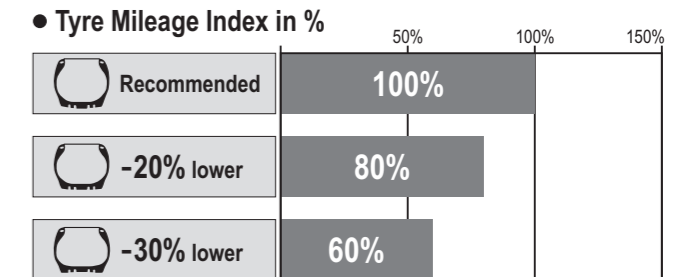
Tyre wear depends upon the pay load carried. WESTLAKE recommends carrying the pay loads on correct axles and carry heavy load on drive axle position if applicable.

SEASONAL / AMBIENT TEMPERATURES



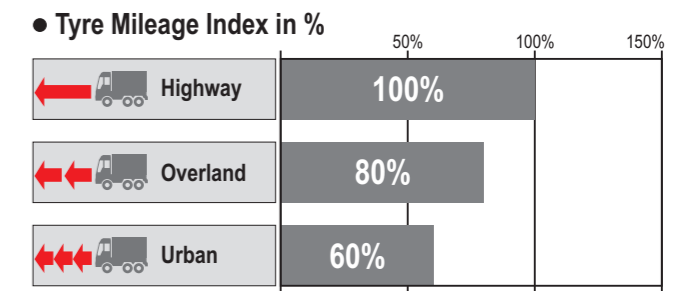
Tyre wear is temperature dependent. WESTLAKE recommends carrying out a tyre service before the summer season.

INFLATION PRESSURE



The proper inflation pressure is essential for the tyre performance for every application. WESTLAKE recommends frequent inflation checking. If necessary increase tyre inflation as per the recommendation of load and inflation PRODUCT TECHNICAL DATA or inflation stickers.

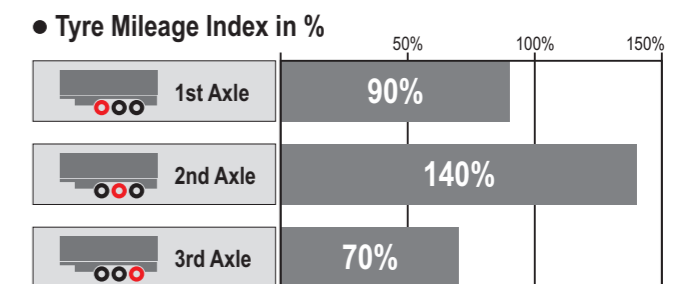
STOP AND ACCELERATION OPERATION



Rapid or frequent stop and acceleration traffic results in additional tread wear to tyres and reduce the tyre life.

WESTLAKE recommends mild steering & braking especially while turning or curving in daily use. Furthermore new products with special tread and enhanced sidewall will be developed for city operation with more frequent "stop and go" situation.

TRAILER AXLES



Trailer tyre wear is dependent on the side force of the axles of trailers. WESTLAKE recommends proper tyre rotation when utilizing retreaded tyres.



- Long distance journey with constant speed and less braking and accelerating
- Excellent paved road condition with less curves
- Less fuel consumption and comfortable ride
- High mileage performance

Highway Country Road City Construction Site



WSL1



Long Run / Steer Axle

New steer tyre designed with innovative WESTLAKE latest technology for long haul application.

- Computer designed tyre structure provides excellent footprint profile and ensures superior comfort.
- Special tread compound guarantees low rolling resistance help to reduce fuel consumption.
- Straight tread pattern designed to minimize uneven wear.

SIZE	SERVICE INDEX				NOISE (dB)
355/50R22.5	156K(154L)	D	C	2	73
385/55R22.5	158L(160K)	D	C	2	73
295/60R22.5	150/147K(149/146L)	D	C	2	73
315/60R22.5	154/150L	D	C	2	73





WDL1

M+S



Long Run / Drive Axle

New drive tyre designed with innovative WESTLAKE latest technology for long haul application.

- Deep tread depth and wider tread with robust tread block produce outstanding traction on both dry and wet road surface.
- Special shoulder design with low-heating compound ensures less tread wear longer tyre life.
- Tread pattern designed to enhance mileage, traction and driving stability.

SIZE	SERVICE INDEX				NOISE (dB)
295/55R22.5	147/145K	D	C	2	74
295/60R22.5	150/147K(149/146L)	D	C	2	74
315/60R22.5	154/150K(152/148L)	D	C	2	74



WTL1

M+S

Long Run / Trailer Axle

New wide base trailer tyre with WESTLAKE's latest technology for long haul application.

- 5-Rib tread design enhances longer mileage.
- Computer designed tyre structure provides excellent footprint profile and ensures superior comfort and even wear.
- Special tread compound guarantees less fuel consumption with lower rolling resistance.
- Stone ejectors in U-shape grooves minimize the stone holding and penetration.

SIZE	SERVICE INDEX				NOISE (dB)
445/45R19.5	160L	C	C	2	73
435/50R19.5	160J	D	C	2	73
385/55R22.5	160K(158L)	B	C	2	71
385/65R22.5	158L(160K)	C	C	2	71





REGIONAL

- Short to middle distance journey with frequent braking, accelerating and turning
- Good paved road with many curves and unexpected rough conditions
- Challenging road conditions in winter with snow and ice

Highway

Country Road

City

Construction Site



WSR+1

M+S

All Routes / Steer Axle

New steer tyre engineered with innovative WESTLAKE's latest technology for local and regional operations with rims of 17.5" and 19.5" .

- Computer designed 5-Rib tread provides precise handling.
- Tread sipes alongside tread grooves offer outstanding wet operation and even tread contact on road surface.
- Advanced tyre casing design promises good footprint and avoids uneven wear.

SIZE	SERVICE INDEX				NOISE (dB)
245/70R17.5	136/134M	D	D	2	72
205/75R17.5	124/122M(126/124G)	D	D	2	72
215/75R17.5	128/126M	D	D	2	72
225/75R17.5	129/127M	D	D	2	72
235/75R17.5	132/130M	D	D	2	72
245/70R19.5	136/134M	D	D	2	72
265/70R19.5	140/138M	D	D	2	72
285/70R19.5	146/144M	D	D	2	72





WSR1

M+S

All Routes / Steer Axle

New steer tyre engineered with innovative WESTLAKE's latest technology for local and regional operations.

- Advanced 5-Rib tread provides even wear and remarkable handling.
- Special designed tread pitches ensure low external noise.
- Tread sipes with straight tread grooves guarantee excellent water drainage and outstanding wet traction.
- Computer designed tyre casing promises good footprint to extend tyre life.

SIZE	SERVICE INDEX				NOISE (dB)
385/65R22.5	158L(160K)	C	C	2	71
315/70R22.5	156/150L	C	C	2	71
295/80R22.5	154/149M	D	C	2	71
315/80R22.5	154/151M(156/150L)	C	C	2	71



WDR+1

M+S

All Routes / Drive Axle

New drive tyre designed for local and regional application with rims of 17.5" and 19.5".

- Deep tread depth and wider tread with robust tread blocks ensure outstanding traction on both dry and wet road surfaces.
- Excellent footprint design promises even wear and remarkable tyre life.

SIZE	SERVICE INDEX				NOISE (dB)
245/70R17.5	136/134M	E	D	2	74
205/75R17.5	124/122M	E	D	2	74
215/75R17.5	128/126M	E	D	2	74
225/75R17.5	129/127M	E	D	2	74
235/75R17.5	132/130M	E	D	2	74
245/70R19.5	136/134M	E	C	2	74
265/70R19.5	140/138M	E	C	2	74
285/70R19.5	146/144M	E	C	2	74





WDR1

M+S



All Routes / Drive Axle

New drive tyre designed for local and regional application.

- Deep tread depth ensures longer tyre life.
- Directional tread pattern and robust tread blocks produce outstanding traction on both dry and wet road surface.
- Excellent footprint design promises even wear and remarkable tyre life.
- Special shoulder design with low-heating compound minimizes shoulder heel & toe wear.
- Applicable for snow roads with excellent traction capabilities.

SIZE	SERVICE INDEX				NOISE (dB)
315/70R22.5	154/150L(152/148M)	E	C	2	74
295/80R22.5	152/149M	E	C	2	74
315/80R22.5	156/153L(154/151M)	E	C	2	74



WTR1

M+S

All Routes / Trailer Axle

New wide base trailer tyre with WESTLAKE's latest technology for local and regional application.

- 5-Rib tread and strong shoulder design provide excellent carrying capacity and longer tyre life.
- Computer designed tyre structure provides excellent footprint profile and ensures superior comfort and even wear.
- Special tread compound guarantees less fuel consumption with lower rolling resistance.
- Stone ejectors in U-shape grooves minimize the stone holding and penetration.

SIZE	SERVICE INDEX				NOISE (dB)
385/55R22.5	160K(158L)	B	C	2	71
385/65R22.5	158L(160K)	C	C	2	71
425/65R22.5	165K	C	C	2	73
445/65R22.5	169K	C	C	2	73





WDM1

M+S

Construction Site / Drive Axle

New strong casing tyre with latest WESTLAKE technology for on & off operation.

- Aggressive directional tread and open tread shoulder with robust tread blocks provide extra traction for On & Off application.
- Special tread compound promises better resistance to cuts and tearing.
- Enhanced sidewall structure minimizes unexpected damage from rough road condition.

SIZE	SERVICE INDEX				NOISE (dB)
13R22.5	156/151K	E	C	2	74
295/80R22.5	152/149K	E	B	2	74
315/80R22.5	156/153K(154/151L)	D	B	2	74



- Used both on and off road with expected aggressive, sharp-edge or muddy road condition
- Heavy loads and outstanding durability at slow speed and constant stopping
- Special protection against the damage caused by the road condition

Highway Country Road City Construction Site





WTM1

M+S

Construction Site / Trailer Axle & Steer Axle

New strong casing multi-service tyre for on & off operation.

- Aggressive tread pattern promises remarkable traction for On & Off application.
- Outstanding self-cleaning tread with stone ejector minimizes stone holding and penetration and ensures longer tyre life.
- Robust tread blocks and rugged sidewall casing allow heavy loads and resist casing penetration and damage.

SIZE	SERVICE INDEX				NOISE (dB)
385/65R22.5	160K(158L)	D	C	2	72



- Applicable for heavy load trailers
- Short to long distance transport with reinforced tyre casing for heavy loads

Highway

Country Road

City

Construction Site



WTX1

M+S

MaX Load / Trailer Axle

New trailer tyres with advanced WESTLAKE technology for long haul and regional application.

- Strong computer designed tyre casing guarantees outstanding capacity for heavy loads and highway.
- Special sipes alongside tread ribs help to minimize heating for high speed running with heavy loads.
- Special tread compound provides higher fuel efficiency with lower rolling resistance without sacrificing tyre mileage.

SIZE	SERVICE INDEX				NOISE (dB)
205/65R17.5	129/127K(132/132F)	D	C	2	71
245/70R17.5	143/141J(146/146F)	D	C	2	71
215/75R17.5	135/133J	D	C	2	71
235/75R17.5	143/141J(144/144F)	D	C	2	71
245/70R19.5	141/140J	C	C	2	71
265/70R19.5	143/141J	C	C	2	71
285/70R19.5	150/148J	C	C	2	72



- Designed for winter use only
- Extraordinary traction on snow and ice road surface

Highway

Country Road

City

Construction Site



WSS1

M+S



Snow Proof / Steer Axle

New Steer tyre with WESTLAKE's latest technology for winter application.

- Wide and deep circumferential grooves enhances removal of snow and ice.
- Specific tread compound keep rubber softness in low temperature with good performance.
- Wide tread with advanced block and sipe design provides extra traction for snow and ice road conditions.

SIZE	SERVICE INDEX				NOISE (dB)
315/70R22.5	156/150L(152/148M)	E	C	2	73
315/80R22.5	154/151M(156/153L)	E	C	2	73



WDS1

M+S



Snow Proof / Drive Axle

New drive tyre with WESTLAKE's latest technology for winter application.

- Wide open shoulder deliver additional traction without compromising tread life.
- Specific tread compound keep rubber softness in low temperature with good performance.
- Studable tread design provides extra traction for snow and ice road conditions.

SIZE	SERVICE INDEX				NOISE (dB)
315/70R22.5	154/150L(152/148M)	E	C	2	73
315/80R22.5	156/153K(154/151L)	E	C	2	73





WTS1

M+S



Snow Proof / Trailer Axle

New wide base trailer tyre with WESTLAKE's latest technology for winter application.

- New trailer winter tyre for severe weather conditions.
- Maximized snow and ice grip with special tread compound and CAD tread pattern.

SIZE	SERVICE INDEX				NOISE (dB)
385/55R22.5	160K(158L)	B	C	2	71
385/65R22.5	158L(160K)	B	C	2	71



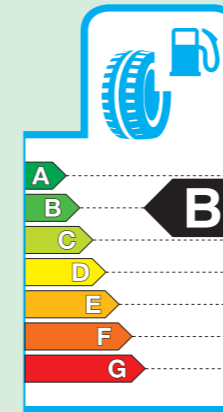
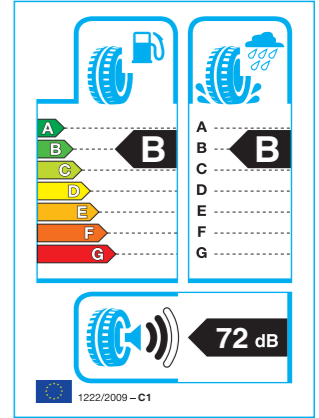
EU TYRE LABEL

In 2012 the European Union introduced a new tyre label, in order to provide standardised information on 3 specific performances; fuel efficiency, wet grip and external rolling noise.

Tyre labelling for passenger cars and light trucks took effect from November 2012, for tyres on sale in the EU under European Regulation (EC/No. 1222/2009) which were manufactured after 1 st July 2012.

The label is accompanied on the actual tyre and gives consumers useful information to assist them when purchasing new tyres.

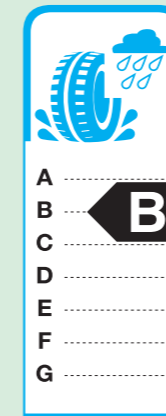
On the right you can find an example of the new EU tyre label. These graphics on the label are similar as those already used for household appliances and more recently new cars.



Fuel Efficiency (Rolling Resistance)

Rolling resistance is one of the main resistive forces on a vehicle, which acts as an opposite force to the direction in which the tyre is rolling. The rolling tyre deforms and dissipates energy. The tyre whose rolling resistance is greater, requires more fuel to move the vehicle forward. Therefore rolling resistance influences fuel consumption and the environment directly.

On the top left of the label, this shows 7 classes which range from A (most efficient) to G (least efficient), the grading indicates the tyre's contribution to fuel efficiency and CO₂ emissions.



Wet Grip (Braking Performance)

Wet grip is one of the most important safety aspects of a tyre. The tyres with excellent grip on wet surfaces have shorter braking distance when driving in rainy weather.

There are other important parameters which are also related to safety. However, consumers will be able to check and select for themselves their preferred performance.

On the top right of the label, wet grip is also expressed in classes ranging from A (highest performance) to G (lowest performance).



External Noise

Traffic noise is a major factor of nuisance and a very relevant environmental issue. On the lower part of the label, this indicates the level of exterior tyre noise from the vehicle (not the internal noise heard by the driver), expressed in decibels. The grading indicates the tyre's contribution to traffic noise and the environment. The label displays sound waves and corresponding levels ranging from 1 (least noise) to 3 (highest noise)

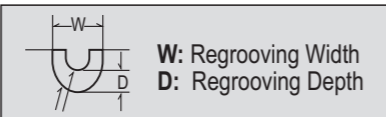
- 1 sound wave**
The best noise level performance.(3 dB below the future European limit*)
- 2 sound waves**
The average performance. (Already compliant with the future European limit*)
- 3 sound waves**
The weakest performance. (Compliant with the current European limit)



EU Tyre Label Icon Explanation

= Fuel Efficiency Class on Regulation (EC) No. 1222/2009 amended by Regulation (EC) No. 228/2011 and Regulation (EC) No. 1235/2011
 = Wet Grip Class on Regulation (EC) No. 1222/2009 amended by Regulation (EC) No. 228/2011 and Regulation (EC) No. 1235/2011
 = External Rolling Noise Class and Measured Value (dB) on Regulation (EC) No. 1222/2009 amended by Regulation (EC) No. 228/2011 and Regulation (EC) No. 1235/2011

REGROOVING PROCEDURE



Regrooved pattern is shown in black.
Recut depth listed is maximum value.
Recut width listed has ± 1 mm tolerance

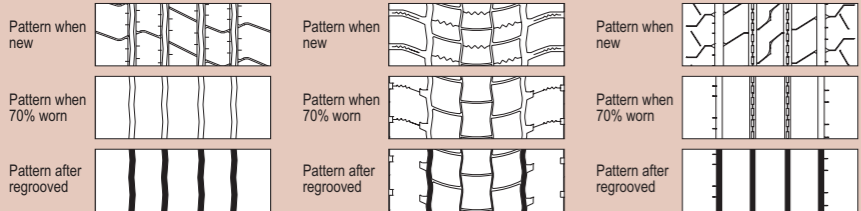
Long Run



WSL1

WDL1

WTL1



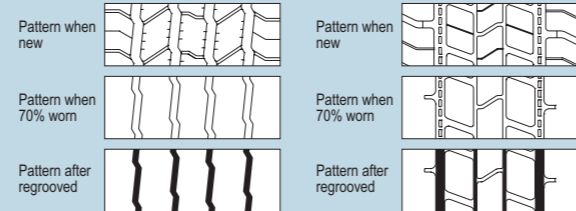
TYRE SIZE	DIMENSION OF REGROOVE		TYRE SIZE	DIMENSION OF REGROOVE		TYRE SIZE	DIMENSION OF REGROOVE	
	DEPTH (D)	WIDTH (W)		DEPTH (D)	WIDTH (W)		DEPTH (D)	WIDTH (W)
355/50 R 22.5	2.3mm	7.0mm	295/55 R 22.5	2.5mm	7.0mm	445/45 R 19.5	2.3mm	7.0mm
385/55 R 22.5	2.3mm	7.0mm	295/60 R 22.5	2.5mm	7.0mm	435/50 R 19.5	2.3mm	7.0mm
295/60 R 22.5	2.3mm	7.0mm	315/60 R 22.5	2.5mm	7.0mm	385/55 R 22.5	2.3mm	7.0mm
315/60 R 22.5	2.3mm	7.0mm				385/65 R 22.5	2.3mm	7.0mm

All Routes



WSR+1

WDR+1



TYRE SIZE	DIMENSION OF REGROOVE		TYRE SIZE	DIMENSION OF REGROOVE	
	DEPTH (D)	WIDTH (W)		DEPTH (D)	WIDTH (W)
245/70 R 17.5	2.5mm	7.0mm	245/70 R 17.5	2.5mm	7.0mm
205/75 R 17.5	2.5mm	7.0mm	205/75 R 17.5	2.5mm	7.0mm
215/75 R 17.5	2.5mm	7.0mm	215/75 R 17.5	2.5mm	7.0mm
225/75 R 17.5	2.5mm	7.0mm	225/75 R 17.5	2.5mm	7.0mm
235/75 R 17.5	2.5mm	7.0mm	235/75 R 17.5	2.5mm	7.0mm
245/70 R 19.5	2.5mm	7.0mm	245/70 R 19.5	2.5mm	7.0mm
265/70 R 19.5	2.5mm	7.0mm	265/70 R 19.5	2.5mm	7.0mm
285/70 R 19.5	2.5mm	7.0mm	285/70 R 19.5	2.5mm	7.0mm

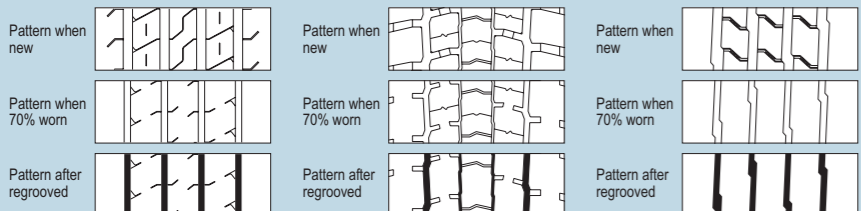
All Routes



WSR1

WDR1

WTR1



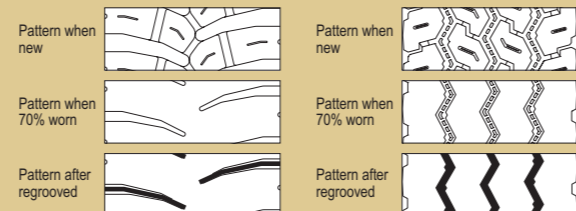
TYRE SIZE	DIMENSION OF REGROOVE		TYRE SIZE	DIMENSION OF REGROOVE		TYRE SIZE	DIMENSION OF REGROOVE	
	DEPTH (D)	WIDTH (W)		DEPTH (D)	WIDTH (W)		DEPTH (D)	WIDTH (W)
385/65 R 22.5	2.3mm	7.0mm	315/70 R 22.5	2.5mm	7.0mm	385/55 R 22.5	2.3mm	7.0mm
315/70 R 22.5	2.3mm	7.0mm	295/80 R 22.5	2.5mm	7.0mm	385/65 R 22.5	2.3mm	7.0mm
295/80 R 22.5	2.3mm	7.0mm	315/80 R 22.5	2.5mm	7.0mm	425/65 R 22.5	2.3mm	7.0mm
315/80 R 22.5	2.3mm	7.0mm				445/65 R 22.5	2.3mm	7.0mm

Mixed Terrain



WDM1

WTM1



TYRE SIZE	DIMENSION OF REGROOVE		TYRE SIZE	DIMENSION OF REGROOVE	
	DEPTH (D)	WIDTH (W)		DEPTH (D)	WIDTH (W)
13 R 22.5	3.0mm	7.0mm	385/65 R 22.5	2.3mm	7.0mm
295/80 R 22.5	3.0mm	7.0mm			
315/80 R 22.5	3.0mm	7.0mm			

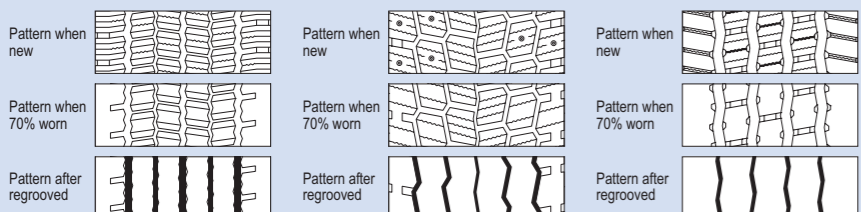
All Routes



WSS1

WDS1

WTS1

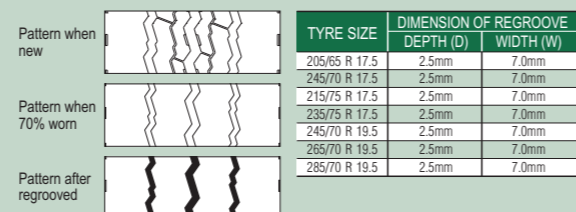


TYRE SIZE	DIMENSION OF REGROOVE		TYRE SIZE	DIMENSION OF REGROOVE		TYRE SIZE	DIMENSION OF REGROOVE	
	DEPTH (D)	WIDTH (W)		DEPTH (D)	WIDTH (W)		DEPTH (D)	WIDTH (W)
315/70 R 22.5	2.5mm	7.0mm	315/70 R 22.5	2.5mm	7.0mm	385/55 R 22.5	2.5mm	7.0mm
315/80 R 22.5	2.5mm	7.0mm	315/80 R 22.5	2.5mm	7.0mm	385/65 R 22.5	2.5mm	7.0mm

MaX Load



WTX1



TYRE SIZE	DIMENSION OF REGROOVE	
	DEPTH (D)	WIDTH (W)
205/65 R 17.5	2.5mm	7.0mm
245/70 R 17.5	2.5mm	7.0mm
215/75 R 17.5	2.5mm	7.0mm
235/75 R 17.5	2.5mm	7.0mm
245/70 R 19.5	2.5mm	7.0mm
265/70 R 19.5	2.5mm	7.0mm
285/70 R 19.5	2.5mm	7.0mm

TECHNICAL INFORMATION

Speed symbol

The speed symbol refers to the maximum speed capabilities of the tyre. It is only valid for tyres that are properly inflated and loaded within their assigned load index.

Speed symbol	Speed (km/h)
E	70
F	80
G	90
J	100
K	110
L	120
M	130

Load index

The load index is the maximum load-carrying capacity of a tyre under a specific condition.

LI	kg	LI	kg	LI	kg	LI	kg
115	1215	129	1850	143	2725	157	4125
116	1250	130	1900	144	2800	158	4250
117	1285	131	1950	145	2900	159	4375
118	1320	132	2000	146	3000	160	4500
119	1360	133	2060	147	3075	161	4625
120	1400	134	2120	148	3150	162	4750
121	1450	135	2180	149	3250	163	4875
122	1500	136	2240	150	3350	164	5000
123	1550	137	2300	151	3450	165	5150
124	1600	138	2360	152	3550	166	5300
125	1650	139	2430	153	3650	167	5450
126	1700	140	2500	154	3750	168	5600
127	1750	141	2575	155	3875	169	5800
128	1800	142	2650	156	4000	170	6000

